



# **ESSEX COUNTY OFFICE OF COMMUNITY RESOURCES**

7551 Court Street · P.O. Box 217 · Elizabethtown, New York 12932  
Telephone (518) 873-3426 · Fax (518) 873-3751

Anna Reynolds  
Director

Rob Wick  
Project Manager

**TO:** All Bidders

**FROM:** Rob Wick, PMP Project Mgr

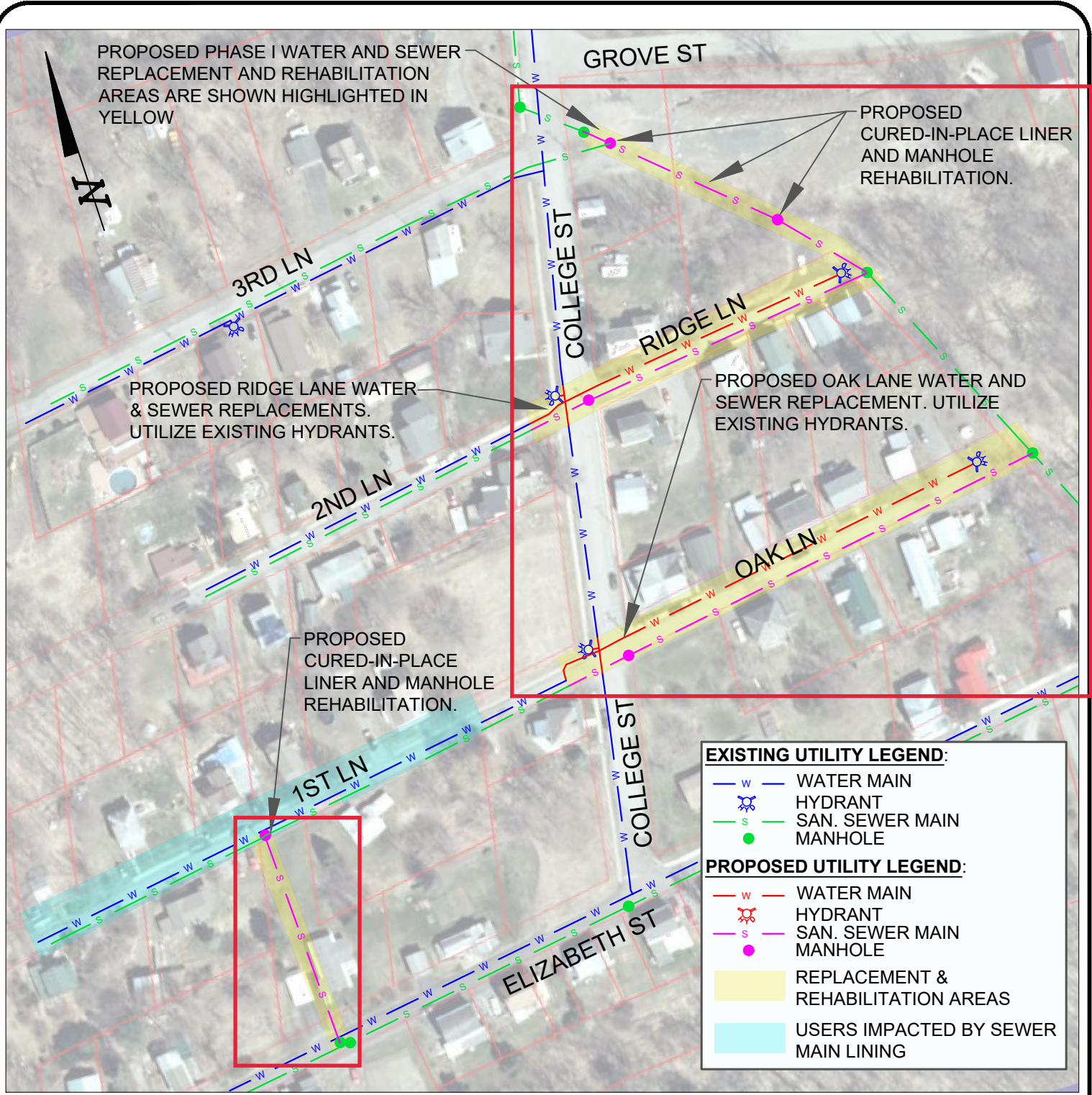
**DATE:** February 28th, 2019

**SUBJECT:** Addendum #3 Moriah / Port Henry Water Sewer Replacements RFP

## **1. Correction to Project Area and Utility Measurements:**

- a. RFP Addendum 1 stated 3,000 LF for to project area, this is corrected to the following:
  - i. 205 LF of sanitary sewer main lining & (1) manhole rehabilitation between 1st Ln & Elizabeth St.
  - ii. 770 LF of sanitary sewer main for Oak & Ridge Lanes.
  - iii. 715 LF of water main for Oak & Ridge Lanes.
  - iv. (2) manhole rehabilitation between Ridge Ln. & College St.
  - v. (2) manhole replacements at intersections of College St. and Oak Ln. and College St. and Ridge Ln.
  - vi. Cured in Place (CIP) liner to rehabilitate the sewer main between Ridge Ln. & Grove St.
  - vii. Approx. 430 LF of pavement restoration
  
- b. Along with the corrections noted above, there are the following appurtenances to be included, at a minimum:
  - i. (8) water main gate valves
  - ii. (16) water services
  - iii. (16) sewer laterals and clean outs
  
- c. Refer to mark ups on attached map, from Appendix B of the RFP, for additional reference.

END OF ADDENDUM # 3



1
G-2
**PROPOSED SCHEMATIC PLAN**  
 SCALE: 1" = 125'

- NOTES:**
- THIS DRAWING HAS BEEN GENERATED FROM INFORMATION PROVIDED BY THE TOWN AND AVAILABLE DOCUMENTATION FOR THE PURPOSES OF PREPARING A COMMUNITY DEVELOPMENT BLOCK GRANT APPLICATION TO THE OFFICE OF COMMUNITY RENEWAL.
  - SANITARY SEWER AND WATER MAINS ARE SHOWN IN APPROXIMATE LOCATIONS.
  - WATER SERVICES, VALVES AND SANITARY SEWER LATERALS ARE NOT SHOWN ON THE MAP FOR CLARITY.
  - ALTHOUGH CURED-IN-PLACE LINING IS CALLED OUT FOR CERTAIN SECTIONS OF SEWER MAIN, ADDITIONAL SURVEYING AND INSPECTION SHALL BE REQUIRED BEFORE DETERMINING FINAL CONSTRUCTION METHODS.

**1ST, 2ND, 3RD LANE  
PROPOSED SCHEMATIC**

COPYRIGHT (C) CEDARWOOD ENGINEERING SERVICES PLLC ALL RIGHTS RESERVED

**TOWN OF MORIAH**

MORIAH                      NEW YORK  
ESSEX

**G-2**

**CEDARWOOD**  
 ENGINEERING SERVICES PLLC

3903 Main St, Warrensburg, NY 12885. (P) 518.623.5500  
 8-12 Dietz St, Suite 302, Oneonta, NY 13820.  
 (P) 607.441.3246